



Red Grandis

High Performance FSC® Certified 100% Hardwood



The Hardwood of the Future Exclusive to Timbmet


**Stanbrook
& Nicholson**

 **TIMBMET**
Everything wood should be

Red Grandis

Outstanding workability and durability – and FSC Certified 100%

- **Responsibly sourced Red Grandis (*Eucalyptus grandis*)** – a plantation-grown FSC Certified 100%, uniform hardwood timber.
- **Durable and fungi resistant** – independently tested in the UK by TRADA Technology achieving Durability Class 2-3 – durable to moderately durable.
- **Structurally tested** – BRE tests also prove D35 structural properties and C36 density.
- **Exclusive to Timbmet** – as sawn hardwood, mouldings or Timbmet Engineered Components (TEC®) – for added dimensional stability, less waste and reduced production time.
- **All purpose** – suitable for high end internal and external application including mouldings, window and door frames, furniture and cabinets.
- **High quality finish** – easily stained or painted to look like other species such as Oak, Sapele and Meranti.
- **Longer, wider boards** – careful management ensures tall straight trees free from natural defects with stress-free straight grain.
- **Easy to machine** – excellent working properties.
- **Continuity of supply** – extensive stocks of sawn boards, mouldings and engineered product.
- **Fully EUTR compliant**



The mark of responsible forestry



European Union Timber Regulation

The March 2013 European Union Timber Regulation prohibits the placing and trade of illegally harvested timber and timber products within the EU.

The obligation is with first placers or operators to adopt a 'due diligence' system to minimise the risk of illegal timber being imported. However all traders further down the supply chain are required to keep records of who they buy timber products from in order that items can be traced back to the original operator. The best way to avoid any penalties or fines is to only purchase from reputable suppliers with a proved due diligence system in place..

Timbmet have been operating a due diligence system since 2007 and have been vetting suppliers' credentials for years. Red Grandis is the only plantation grown, FSC Certified 100%, TRADA and BRE tested red hardwood in the UK – exclusively from Timbmet and entirely EUTR compliant.

Making the most of Sustainable Forestry



Plantation Grown

The 30,000 hectare Cofusa and Urufor plantation is in the North-East of Uruguay and has been devoted to the development of Red Grandis since 1989.



Good Yield

A 20 year growing cycle ensures a good yield of large diameter logs with no natural defects.



Forestry Improvement

The company operates a programme of forestry improvement which includes proper soil preparation, fertilisation and weed control.



FSC Certification

The company has been FSC certified since 2001, reflecting its proper use of forestry resources and the implementation of specific regulations ensuring the plantations are well managed with consideration for people, wildlife and the environment.

State-of-the-art Production

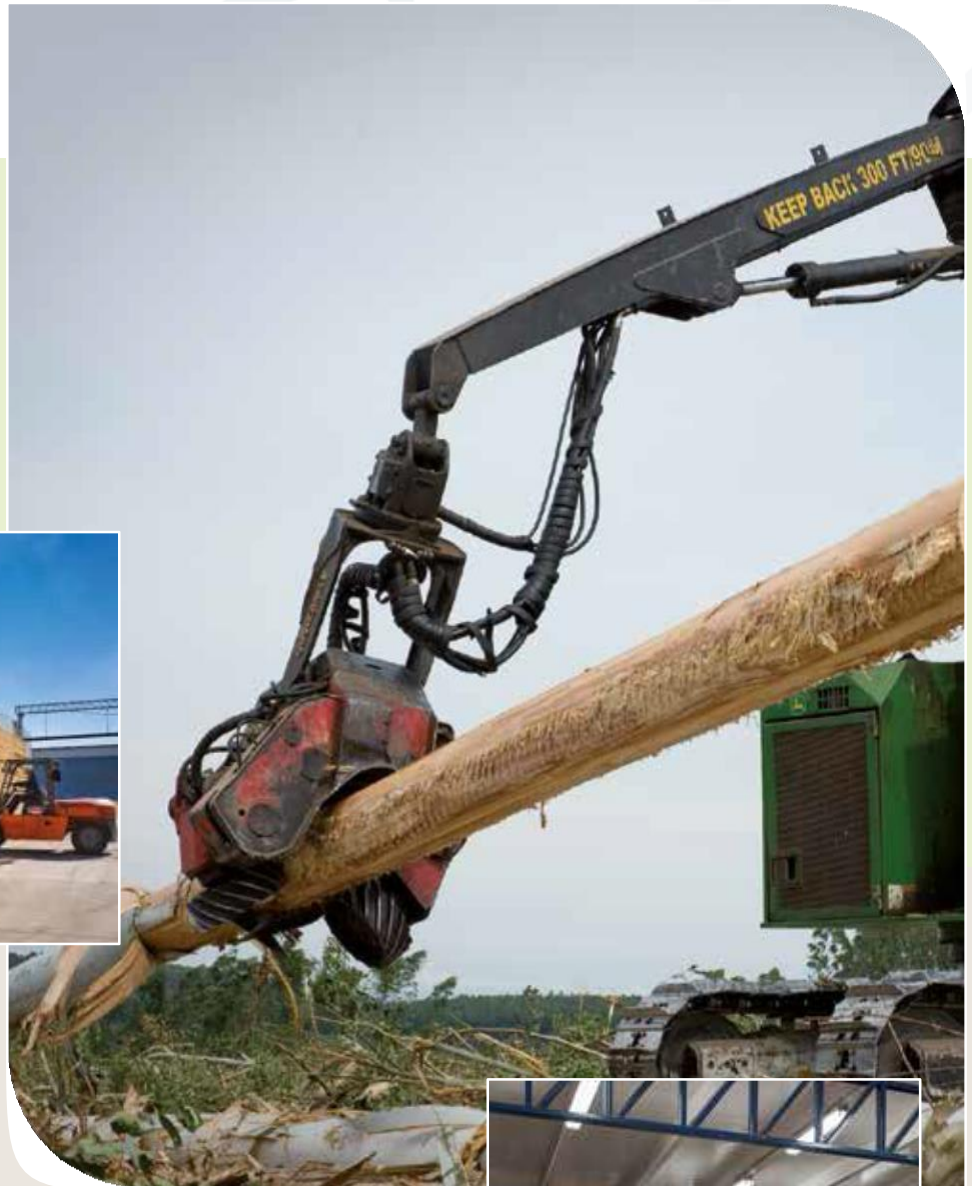
All Year-round Harvesting

Due to the local soil condition, climate and investment in road improvement, tree harvesting can be carried out all year round. Using the latest mechanical harvesting techniques ensures a continuous supply of high quality logs.



High Tech Drying

Planks are stockpiled and dried in high tech drying rooms where air speed, temperature and humidity are carefully controlled. When this slow and painstaking process is completed, planks are packaged for worldwide distribution.



New Production Mill Using The Latest Technology

Logs are processed in a modern saw mill using state-of-the-art production technology. The resulting dimensionally stable, large planks are all uniform high quality.



Red Grandis

Exclusively from Timbmet



Sawn timber

| | |
|-----------|------------------------------|
| Width | 75mm and wider |
| Length | 1.8m and longer |
| Thickness | 25mm, 32mm, 38mm or 50mm |
| Density | 575kg/m ³ average |

Available as Loose boards or Packs of 1.5m³ – 3.5m³

Red Grandis & Grandis Oak Coating System

A great look of Oak at the fraction of the cost

The Timbmet Teknos partnership now offers Grandis Oak: The perfect Teknos protective stain system combining the outstanding workability and durability of Red Grandis with a great Oak look.

- ✓ Outstanding results – Oak appearance
- ✓ Protects against weathering, UV degradation, mould and fungal attack
- ✓ Fully water-based - reduces harmful emissions and disposal issues
- ✓ Rapid application and fast drying minimises work and storage times
- ✓ Easily maintained for lifetime performance

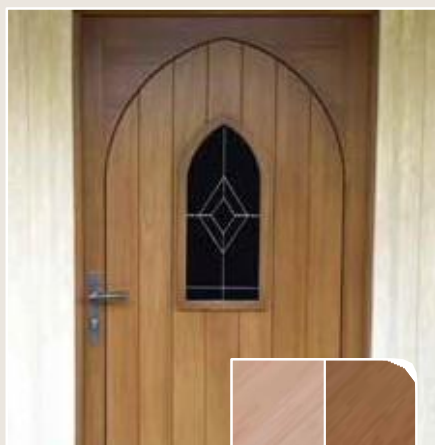


Mouldings

We stock over 40 Red Grandis profiles in our standard mouldings range

- PAR
- Window Board
- Skirting and Architrave
- Small Mouldings
- Cladding
- Cills
- Door Casing and Linings

Full details on our machined range including sizes available on request



Grandis Oak Stain can be purchased from Teknos. Call: 01608 683 494



TEC®

(Timbmet Engineered Components)

The TEC multi-layered construction provides -

- ✓ Dimensional stability far in excess of solid wood
- ✓ Both clear or finger-jointed faces available
- ✓ Reduced waste and lower costs.

Off-the-Shelf TEC

Timbmet's Off-the-Shelf Red Grandis TEC range includes:

- Door Components – Stiles and Rails
- Window Components – Sash or Casement
- Door and Window Frame Sections

Full details on off-the-shelf profiles and sizes available on request

Bespoke TEC and Manufacturing Services

Red Grandis, either as a solid timber or TEC, is suitable for a wide range of applications.

Timbmet provide bespoke solutions to meet specific briefs and can design and machine components to your exact requirements.